

Panasonic
ideas for life

Network Station for Remote Monitoring

Web Datalogger Unit



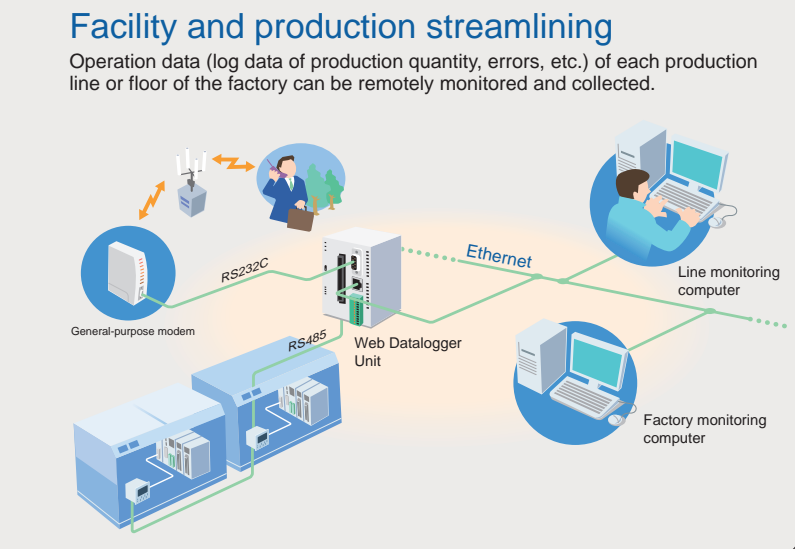
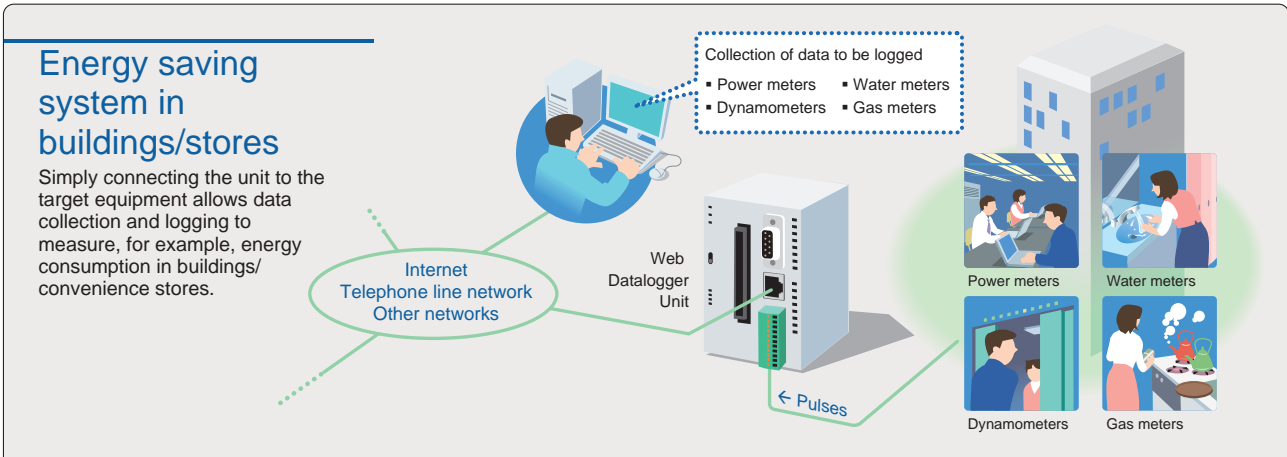
Ideal for energy saving system in buildings and offices,
and streamlining of production lines

**Establish data logging and remote
monitoring systems with simple setup**

Web Datalogger Unit
ARCT1B309E '08.7

New

Equipment, facilities, and service networks for data collection/logging, data transfer via e-mail/website, and system streamlining can be established without special knowledge.

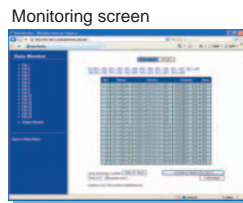


The setup screen can be opened with Internet Explorer (browser) without using special software and can also be used as a simple monitor.

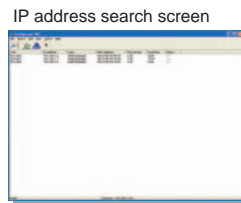
1 Easy to set up and start



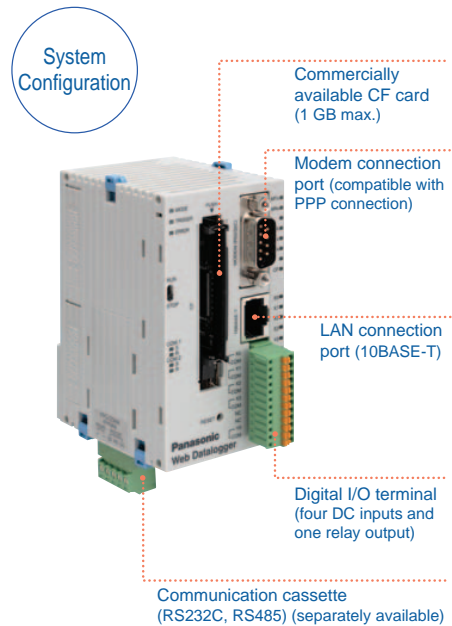
Operation conditions can be easily set by displaying the setting screen of the unit with Internet Explorer without using special tool software. Simple monitoring is also available.



Operation status can be monitored on Internet Explorer by selecting the simple monitoring screen from the setting menu.

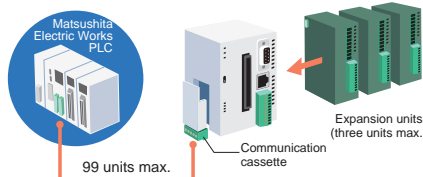


No problems if the user forgets the IP address of a unit connected to the LAN. The dedicated IP address search tool can easily find the IP address.



2 A variety of I/O devices for data collection and alarm output

Our FP0 programmable controllers can be easily connected. Since this unit is also compatible with analog signals, temperature data can be directly retrieved. In combination with the RS485 type communication cassette, up to 99 of our PLC units can be connected.



Web Datalogger Unit

Simple logging without the need of software tools or special knowledge

Collected and logged data is saved on a CF card in CSV format.

(A CF card is not included in the package and should be prepared by users.)



- A CF card can hold up to 60 files, each of which can contain up to 60,000 records x 250 points.

* Only in special cases, data of up to 4,000 points can be collected. For details, please refer to the manual.

- A CF card with a maximum capacity of 1 GB can be used.
- The data collection (record logging) cycle is freely selectable from 1 second to 24 hours.

Example 1

When collecting temperature data of a maximum of 250 points once every ten minutes for control on a daily basis, each file is made up of 144 records (24 hr x 60 min / 10 min), and 60 files i.e. data of 60 days (2 months) can be stored on a CF card.

Example 2

When collecting power data of a maximum of 250 points once every an hour for control on a monthly (30 days) basis, each file is made up of 720 records (24 hr x 30 days), and 60 files i.e. data of 60 months (5 years) can be stored on a CF card.

250 points max. →

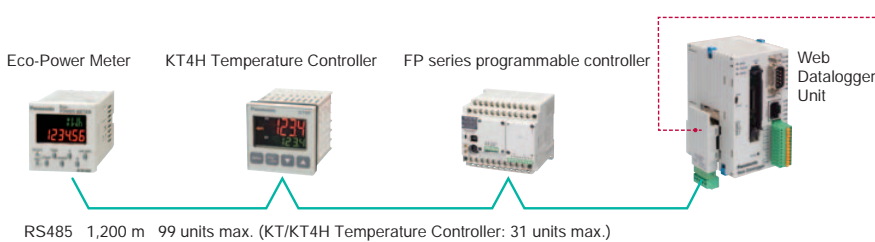
60,000 records max. ↓

	A	B	C	D	E
1	Date	Time	No.1	No.2	No.3
2			COM1	COM1	COM1
3			DT0	DT1	DT2
4			Station 1	Station 2	Station 3
5			FLT	FLT	FLT
6			°C	°C	°C
7	20061201	08.00.00	21.2	19.1	21.0
8	20061201	08.10.00	22.1	19.9	21.9
9	20061201	08.20.00	22.8	20.5	22.6
10	20061201	08.30.00	23.3	21.0	23.1
11	20061201	08.40.00	23.9	21.5	23.7

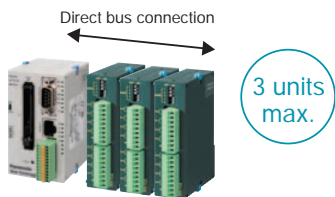
Three data collection methods: Serial communications, direct bus connection, and pulse input

- The RS485 serial communications allow data collection from up to 99 units. No programming for communications is required. Simply designate data (DT) to be collected on the Web Datalogger Unit setting screen if the connected equipment is a KW4M Eco-Power Meter, KT/KT4H Temperature Controller compatible, or FP series programmable controller with MEWTOCOL (Matsushita open protocol).

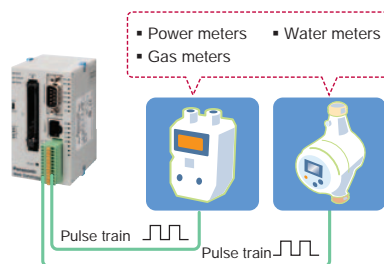
Note 1: An optional communication cassette is required for serial communications.
 Note 2: The maximum connectable number of Multi-Circuit Checker and KT/KT4H Temperature Controller units is 31.
 Note 3: The communication interface for WR10 Wireless Sensor is RS232C.
 Up to 99 units can be connected through RS485 by using our C-NET Adapters.



- FP0 expansion (thermocouple, A/D converter) units can be directly connected to the bus by the built-in connectors. Up to three units can be connected to the right side of the Web Datalogger Unit.



- The four parallel input points allow pulse meters, such as power, gas, and water meters, to be connected.



Web Datalogger Unit
Communication Cassettes (Option)

- For communications with measuring devices Attach one of the cassettes.

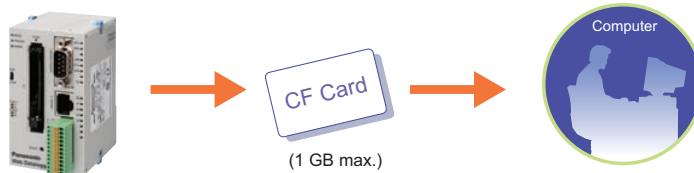
Loading of log data (CSV files)

The data stored by the Web Datalogger Unit (CSV files) can be loaded by three different methods using a computer.

CF Card

Convenient for loading CSV files off-line

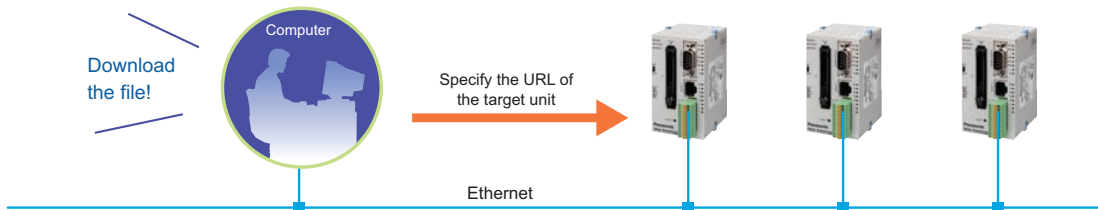
Loading the log data from the CF card is easy particularly if the equipment or facilities are not in a LAN environment or don't need to be networked. A CF card with a maximum capacity of 1 GB can be used in Web Datalogger Unit. (A CF card should be prepared by users.)



FTP Server

For systems in a LAN environment

Web Datalogger Unit has an FTP server function. A computer connected to Web Datalogger Units via the Ethernet LAN can download the CSV files stored on the CF card by specifying the URL of the target Web Datalogger Unit using FTP client software. (It is also possible to erase files on the CF card from the computer.) * FTP: File Transfer Protocol



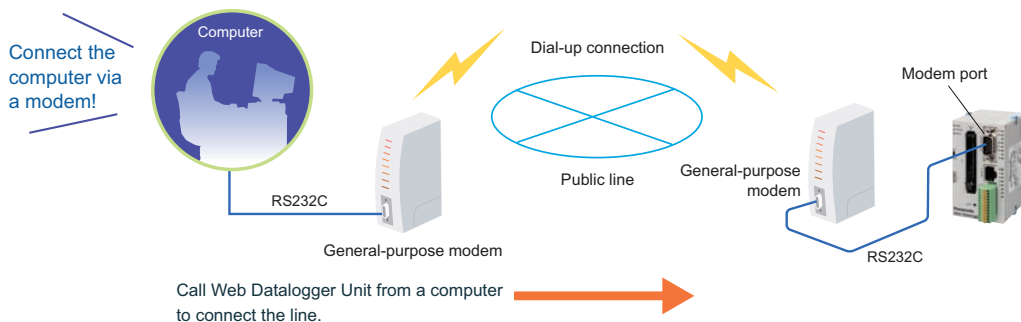
Remarks: The FTP client refers to the side that downloads the data from the server. In the above example, the computer is the FTP client. The FTP server refers to the side that provides the data. In the above example, the Web Datalogger Units are the FTP servers.

PPP Connection

For downloading the data by a computer in a remote location

Web Datalogger Unit can be used as a PPP server by connecting it to the public line through the general-purpose modem. Similarly, if a computer is connected to the public line, the Web Datalogger Unit settings can be changed and the data can be monitored on the computer.

Remark: PPP (Point-to-Point Protocol) is a protocol for 1-to-1 TCP/IP connections of two devices connected by a serial line.



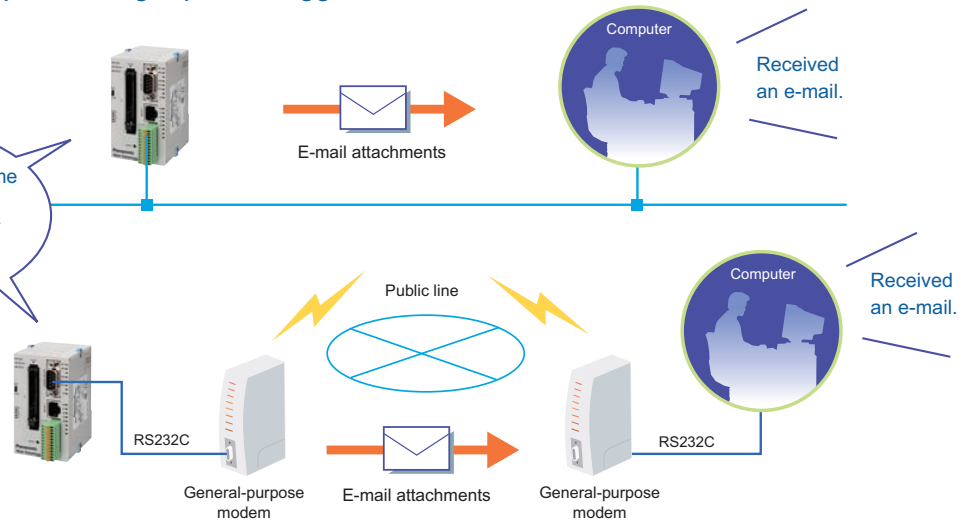
Transfer of log data (CSV files)

The log data (CSV files) can be loaded onto a computer with the timing set for the Web Datalogger Unit.

E-mail attachments

Web Datalogger Unit attaches the data to an e-mail and sends it to a computer using a preset trigger.

Trigger occurs by time schedule, set value, generation of a CSV file.



Downloading and monitoring of data using a browser

The following files can be downloaded from Web Datalogger Unit and monitored.

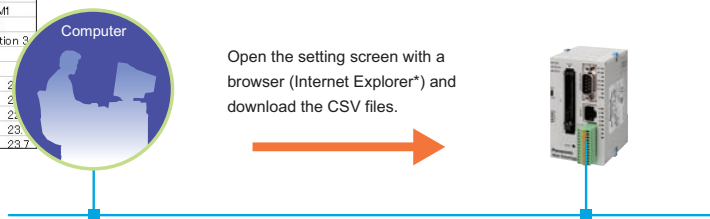
CSV files

CSV files can be downloaded upon request from the Web Datalogger Unit setting screen.

CSV files

	A	B	C	D	E
1	Date	Time	No.1	No.2	No.3
2			OCM1	OCM1	OCM1
3			DT0	DT1	DT2
4			Station 1	Station 2	Station 3
5			FLT	FLT	FLT
6			°C	°C	°C
7	20061201	08:00:00	21.2	19.1	21.2
8	20061201	08:10:00	22.1	19.9	21.2
9	20061201	08:20:00	22.8	20.5	21.2
10	20061201	08:30:00	23.3	21.0	23.3
11	20061201	08:40:00	23.9	21.5	23.7

Data can be monitored with a browser (Internet Explorer*) and saved on a computer.



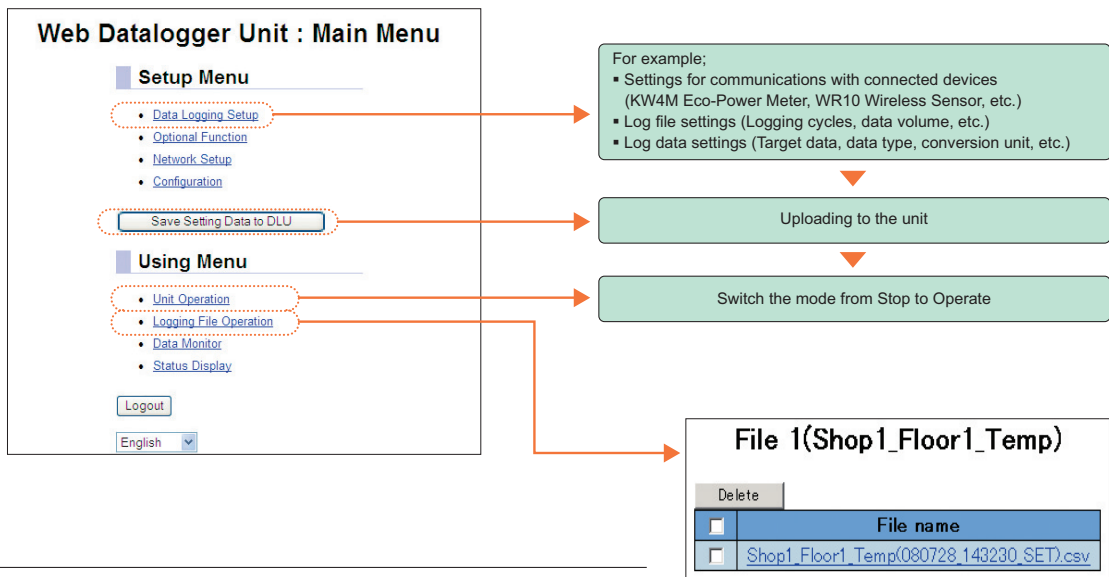
Example of the Web Datalogger Unit operation

No special software is required for setting the conditions of the Web Datalogger Unit or monitoring the data. The setting and monitoring can be easily carried out from a computer by opening the setting screen (HTML file) stored on the F-ROM memory in the unit with Internet Explorer.

1 Call up the setting screen in the Web Datalogger Unit.

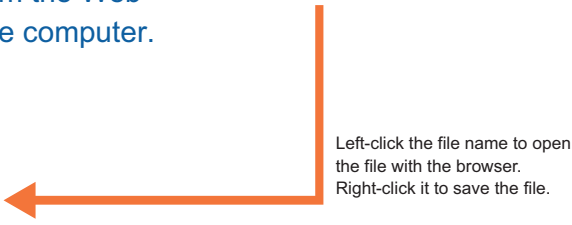


2 Set the unit environment, log file conditions, triggers (for data logging), target data, etc. and upload the settings to the Web Datalogger Unit. Then switch the mode to Operate.



3 Download the log files (CSV files) from the Web Datalogger Unit and save them on the computer.

	A	B	C	D	E
1	Date	Time	No.1	No.2	No.3
2			COM1	COM1	COM1
3			DT0	DT1	DT2
4			Station 1	Station 2	Station 3
5			FLT	FLT	FLT
6			°C	°C	°C
7	20061201	08:00:00	21.2	19.1	21.0
8	20061201	08:10:00	22.1	19.9	21.9
9	20061201	08:20:00	22.8	20.5	22.6
10	20061201	08:30:00	23.3	21.0	23.1
11	20061201	08:40:00	23.9	21.5	23.7



* Internet Explorer is Internet browsing software of Microsoft Corporation.

Web Datalogger Unit

Product name	Model No.	Specifications
Main unit	AFL1200	Logging of data of up to 99 devices
Communication cassette	AFPG801	RS232C × 1ch
	AFPG802	RS232C × 2ch
	AFPG803	RS485 × 1ch
	AFPG806	(RS232C × 1ch) + (RS485 × 1ch)
IP search tool	-	Software for searching IP addresses of Web Datalogger Units connected to the LAN. Can be downloaded free of charge from: http://www.mew.co.jp/ac/e

Global network

East Asia

Panasonic Electric Works Korea Co.,Ltd.

5th Fl, Haeam Bldg, 983-1 Daechi-dong Gangnam-gu,
Seoul 135-842, Korea
TEL +82-2-2052-1050 FAX +82-2-2052-1053

Panasonic Electric Works Korea Co.,Ltd. Bundang Branch Office

Panasonic Electric Works China Co., Ltd.

Lever 6, Tower 2, China Central Place, No.79 Jianguo Road,
Chao Yang District, Beijing 100025 China
TEL +86-10-59255988 FAX +86-10-85185053
<http://www.cmew.com.cn>

Panasonic Electric Works (China) Co., Ltd. Beijing Branch
Panasonic Electric Works (China) Co., Ltd. Shanghai Branch
Panasonic Electric Works (China) Co., Ltd. Dalian Branch
Panasonic Electric Works (China) Co., Ltd. Shenyang Branch
Panasonic Electric Works (China) Co., Ltd. Guangzhou Branch
Panasonic Electric Works (China) Co., Ltd. Shenzhen Branch
Panasonic Electric Works (China) Co., Ltd. Chengdu Branch

Panasonic Electric Works Hong Kong Co., Ltd.

"Rm1205-9,12/F,Tower 2,The Gateway, 25 Canton Road,Tsimshatsui,
Kowloon, Hong Kong"
TEL +852-2956-3118 FAX +852-2956-0398

Panasonic Electric Works Sales Taiwan Co., Ltd.

15th Floor, No.44, 2nd Section, Chung Shan North Road, Taipei, Taiwan
TEL +886-2-2581-6020 FAX +886-2-2581-6354

Asia Middle East

Panasonic Electric Works Asia Pacific Pte. Ltd.

101 Thomson Road, #25-03/05, United Square, Singapore 307591
TEL +65-6255-5473 FAX +65-6253-5689

Panasonic Electric Works Asia Pacific Pte. Ltd. India Branch Office
PT. Panasonic Electric Works Gobel Sales Indonesia
Panasonic Electric Works Asia Pacific Pte Ltd.Vietnam Representative Office
Panasonic Electric Works Sales (Thailand) Co., Ltd.
Panasonic Electric Works Sales Malaysia Sdn. Bhd.
Panasonic Electric Works Sales Philippines Corporation
Panasonic Electric Works Sales Middle East FZE.
Panasonic Electric Works Sales Middle East FZE. Turkey Liaison Office

Americas

Panasonic Electric Works Corporation of America

629 Central Avenue, New Providence, NJ 07974, U.S.A.
TEL +1-908-464-3550 FAX +1-908-464-8513
<http://pewa.panasonic.com/>

Panasonic Electric Works Corporation of America New Jersey Sales Office
Panasonic Electric Works Corporation of America Chicago Sales Office
Panasonic Electric Works Corporation of America San Jose Sales Office
Panasonic Electric Works Corporation of America Los Angeles Sales Office
Panasonic Electric Works Corporation of America Automotive Sales Office
Panasonic Electric Works Corporation of America Kentucky Sales Office
Panasonic Electric Works Corporation of America Canada Branch Office
Panasonic Electric Works Corporation of America Brazil Representative Office

Europe

Panasonic Electric Works Europe AG

Rudolf-Diesel-Ring 2,D-83607 Holzkirchen, Germany
TEL +49-8024-648-0 FAX +49-8024-648-111
<http://www.panasonic-electric-works.com/peweu>

Panasonic Electric Works Deutschland GmbH
Panasonic Electric Works Polska Sp. z o.o.
Panasonic Electric Works Europe AG Hungary Representative Office
Panasonic Electric Works UK Ltd.
Panasonic Electric Works UK Ltd. Irish Branch Office
Panasonic Electric Works Austria GmbH
Panasonic Electric Works Schweiz AG
Panasonic Electric Works Italia s.r.l.
Panasonic Electric Works Sales Western Europe B.V.
Panasonic Electric Works Sales Western Europe B.V. French Branch Office
Panasonic Electric Works Espana S.A.
Panasonic Electric Works Espana S.A. Portugal Branch Office
Panasonic Electric Works Nordic AB
Panasonic Electric Works Czech s.r.o.

Please contact

Panasonic Electric Works Co., Ltd.

Automation Controls Business Unit

■ Head Office: 1048, Kadoma, Kadoma-shi, Osaka 571-8686, Japan

■ Telephone: +81-6-6908-1050 ■ Facsimile: +81-6-6908-5781

<http://panasonic-electric-works.net>

Panasonic®

All Rights Reserved © 2008 COPYRIGHT Panasonic Electric Works, Ltd.